



FOR LEASE | WAREHOUSE/OFFICE SPACE



Bays DEF 1135 44 Ave SE

AVAILABLE: IMMEDIATELY

Calgary, Alberta

Municipal Address

1135 44 Avenue SE
Calgary, Alberta

Legal Description

Plan 7810587, Block 11 Lot 10

Zoning

I-G Industrial—General

Area

12,237.7 sq. ft.

Operating Costs

\$5.53 / sq. ft. (2023 CAM & Tax)

Power

200A, 120/208V, 3 Phase

Ceiling Height

18' 3" / 5.56m

Bay Dimensions

128'5" L x 96' W
39.14m L x 29.26m W

Loading & Access

(3) Dock Height 8' W x 9' H

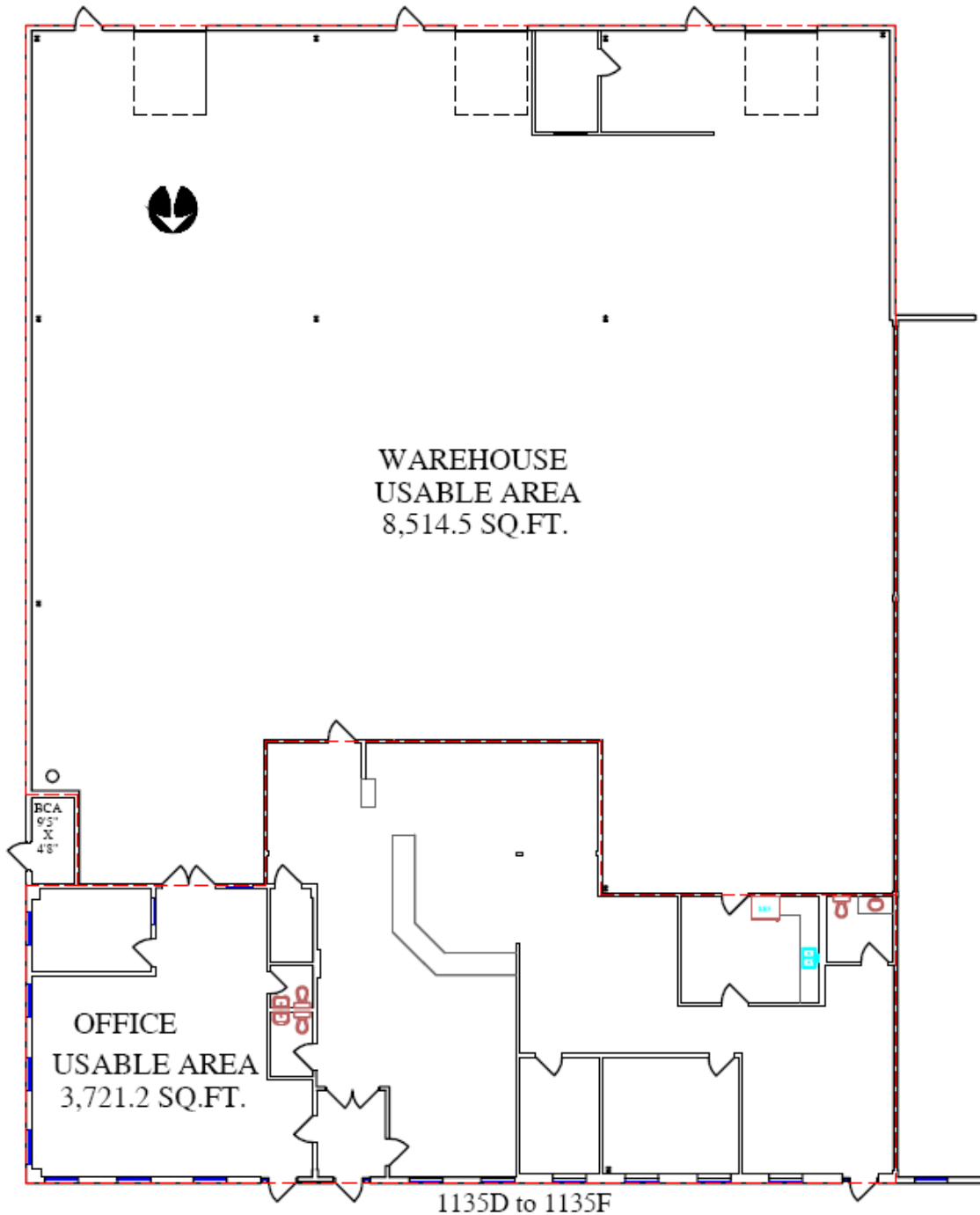
The information contained herein may change and the property removed from the market at any time without prior notice. It has been obtained from sources believed to be correct but does not form part of any present or future contract.



Bays DEF 1135 44 Ave SE

AVAILABLE: July 1, 2022

Calgary, Alberta



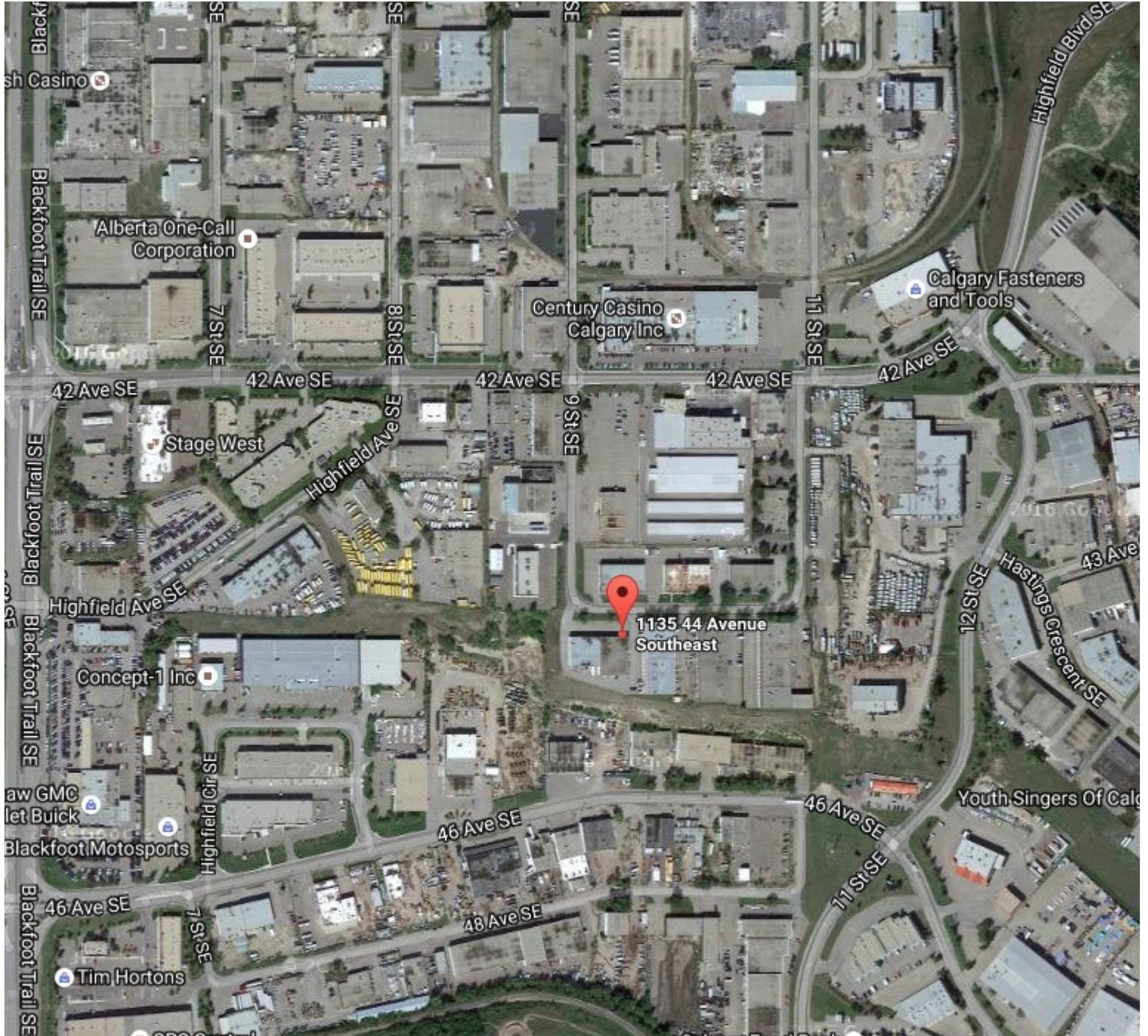
The information contained herein may change and the property removed from the market at any time without prior notice. It has been obtained from sources believed to be correct but does not form part of any present or future contract.



Bays DEF 1135 44 Ave SE

AVAILABLE: July 1, 2022

Calgary, Alberta



The information contained herein may change and the property removed from the market at any time without prior notice. It has been obtained from sources believed to be correct but does not form part of any present or future contract.